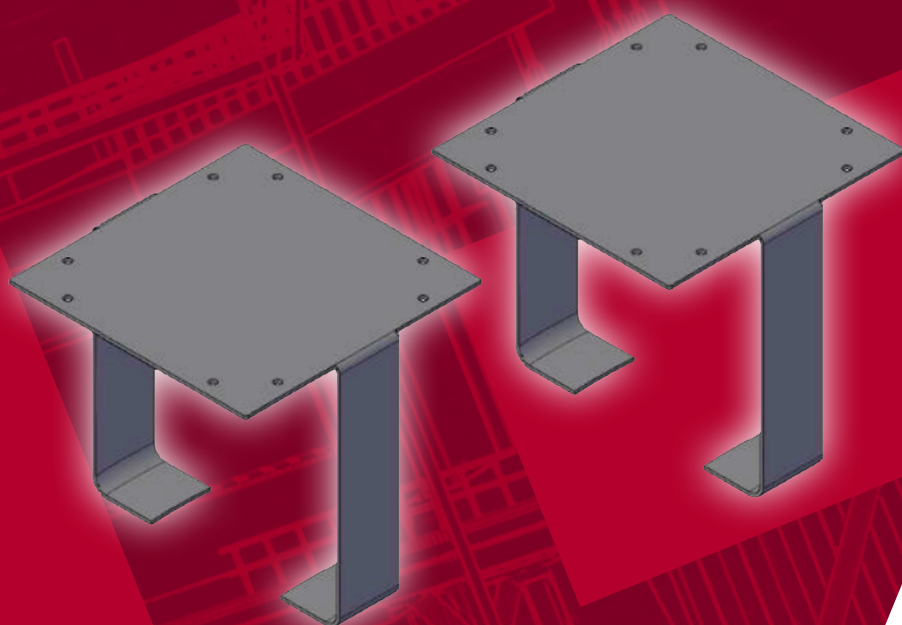


Support bracket for junction box

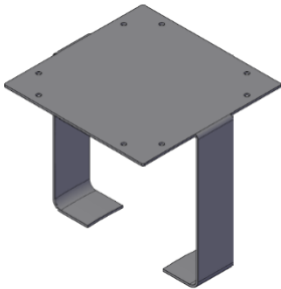
410007 / 410008



410007 / 410008

SUPPORT BRACKET FOR JUNCTION BOX

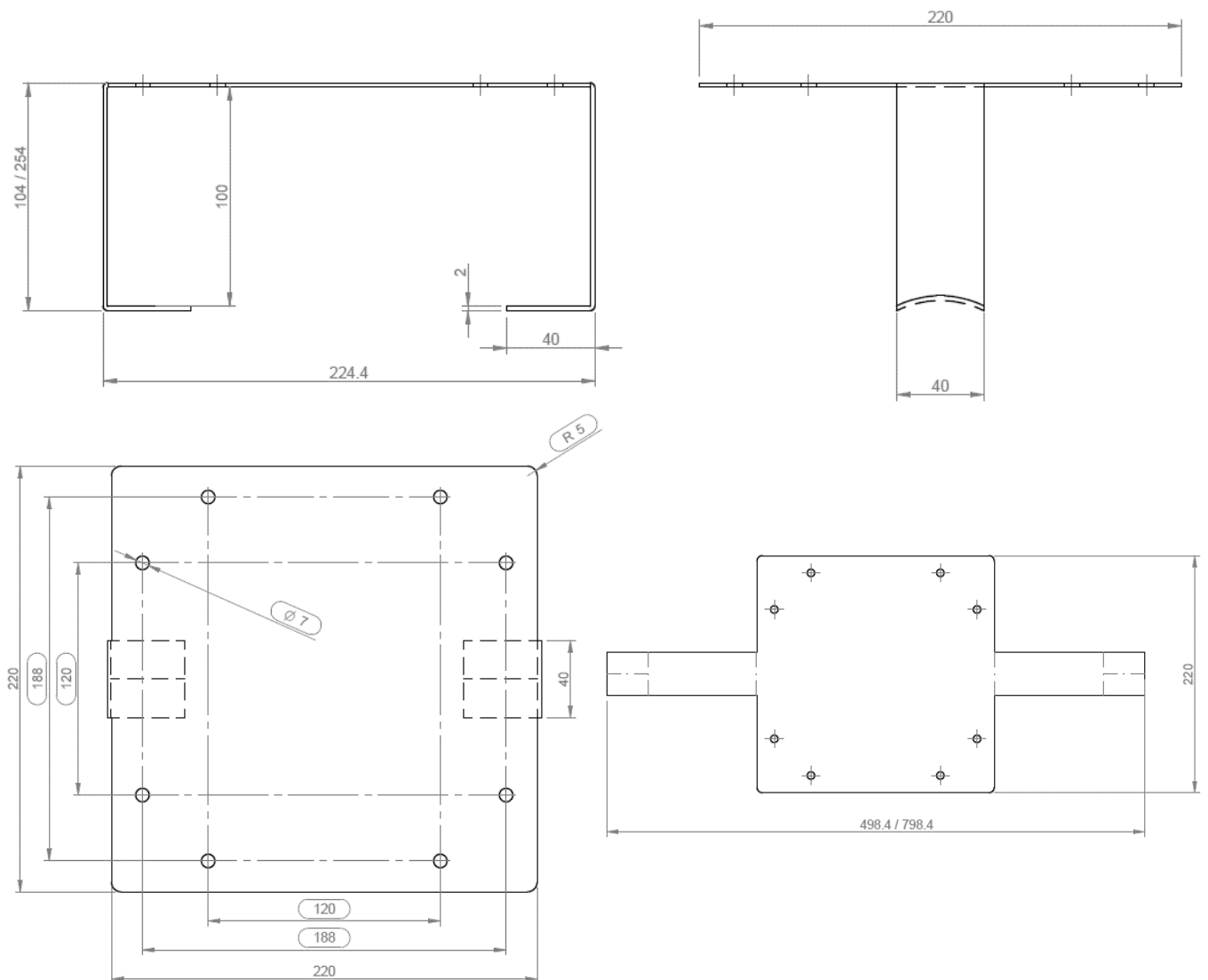
1. DESCRIPTION



Stainless Steel Support bracket used to fix equipment such as junction boxes or sensors on pipes and/or equipment.

It is necessary worm gear hose clamps (see ref. 61000x) for mounting the support bracket on pipe.

2. CONSTRUCTION



410007 / 410008

SUPPORT BRACKET FOR JUNCTION BOX



3. FEATURES

Support bracket fabricated in stainless steel of 2mm thickness. Two legs of 100mm (410007) and 250mm (410008) height.

Used for junction boxes:

- 520013
- 520014



TRACELEC

HEATING SOLUTIONS

c/ Josep V. Foix 10 · 43007 Tarragona · Spain
+34 977 290 039 · ofertas@tracelec.es
www.tracelec.es